

CHEMITORUS 50/75

- High-Speed wash
- Low Flow Rates
- Low pressure operation
- Compact design



- FDA or ATEX certification
- pressure range 2 – 10 bar
- cleaning radius up to 1,6 meters
- flow rate from 8pm up to 65lpm
- steady spray pattern
- fast aggressive wash
- also available as Torus variant
- cheap hastelloy replacement

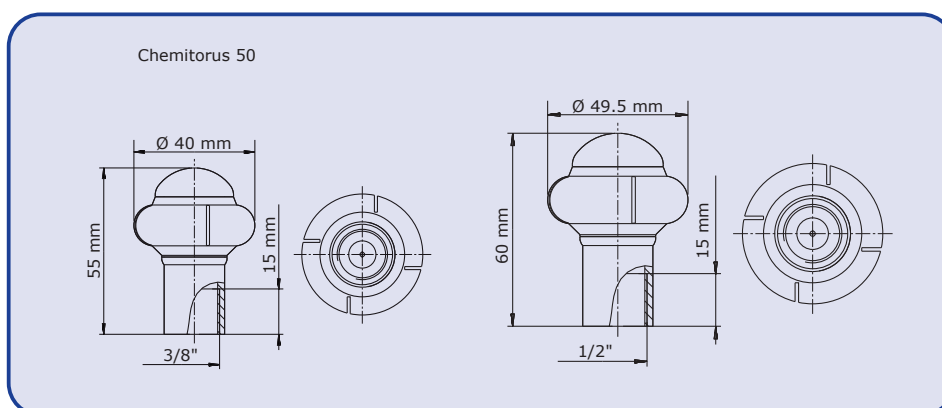
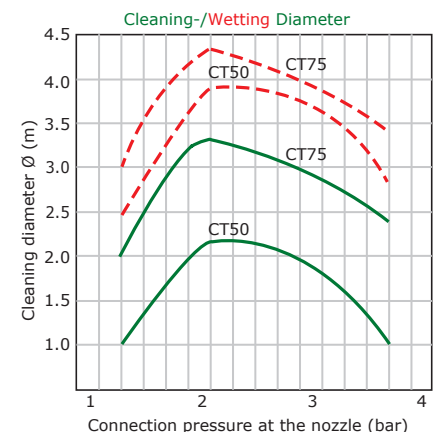
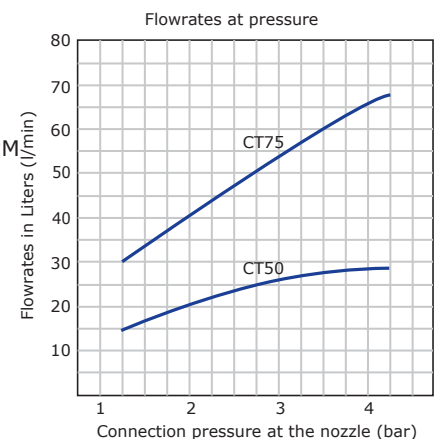
The CHEMITORUS is suitable for low-pressure applications with low water volumes. The plastic construction and the ability to operate the CHEMITORUS at low pressures and flow rates from 10 litres gives it an advantage in many applications. During operation, the cleaning liquid causes a rotor with slots to rotate rapidly, causing high-energy drop-lets to all around all areas. The CHEMITORUS consists of only 2 parts and is ideal for impact rinsing and continuous cleaning with a strong cleaning effect. The TORUS cleans itself during operation. Due to the sliding bearing system of the TORUS these nozzles can often be used for years with almost no wear. The TORUS also promises to be with compressed air or hot steam sterilisation and high temperatures (depending on the application).

The TORUS can replace static spray balls in tanks up to 3.3 metres and produces a fully covering distribution and good mechanical cleaning with a small amount of liquid distribution and good mechanical cleaning effect. The TORUS is suitable for cleaning tanks and plant components in highly sensitive applications. It is compactly designed so that it can be installed inside pipelines. The TORUS is available in 3 different sizes.

The CHEMITORUS is made of FDA and/or ATEX certified materials. For the first time, these cleaning nozzles can be ATEX and FDA certificates can be issued at the same time. The CHEMITORUS is available in 360° and 180° versions. The CHEMITORUS is also available as TORUS with stainless steel thread or made of Hastelloy as well as TORUS 100.

Technische Daten:

Max. cleaning diameter:	CTorus50 2,2 meter / CTorus75 3,3 meter
Spray pattern:	360° und 180° up-, downwards
Pressure range:	1 – 4 bar
Flow rate:	CTorus50 15 – 28 LPM / CTorus75 30 – 67 LPM (0,9 - 4,0 m³/h)
Insertion opening:	CTorus50 BSP/NPT min. Ø 42 mm, CTorus75 BSP/NPT min. Ø 52 mm
Preferred mounting position:	arbitrary
Weight:	CTorus50 ca. 0,039 KG, CTorus75 ca. 0,061 KG
Materials:	C.PTFE, PTFE
Pipe connection:	CTorus50 3/8" BSP (NPT) female CTorus75 1/2" BSP (NPT) female
Nozzle characteristics:	Ball with slots
Certifications:	2.2, ATEX, FDA, Regulation EU 1935/2004
Max. operating temperature:	65°C (149°F)
Max. ambient temperature:	75°C (167°F), 30Min.



The data, technical data and information presented do not release the user from the obligation to check the suitability of the products supplied for the intended application. All information is without guarantee. (Status: 25.01.2022-71427321893-1888948-71042)