

# CHEMIDISC

- No ball bearings
- Fast, aggressive wash
- Chemically resistant
- lightweight plastic construction



- FDA or ATEX certification
- pressure range 2–4 bar
- cleaning radius up to 2.5 meters
- flow rate from 45lpm up to 245lpm
- perfect spray ball replacement
- cheap hastelloy alternative
- also available as Turbodisc
- steady spray pattern
- no ball bearing



**Versatile & Unique** - The CHEMIDISC offers powerful low cost cleaning performance manufactured in chemical resistant materials for the pharmaceutical, chemical, nuclear, and food industries where FDA CFR21 compliance, and heightened standards of hygiene and performance are necessary. CHEMIDISC sprayheads are ideal for burst rinsing and can be placed into the tank at any angle.

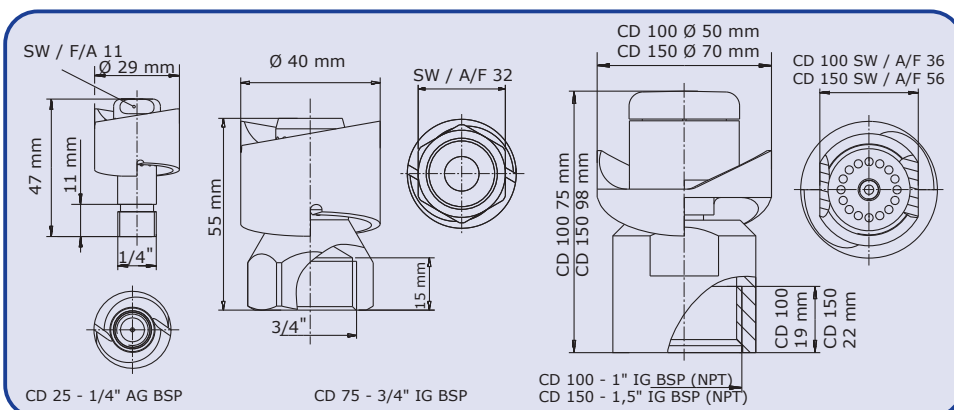
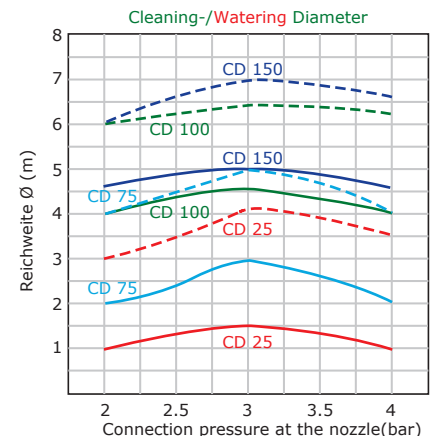
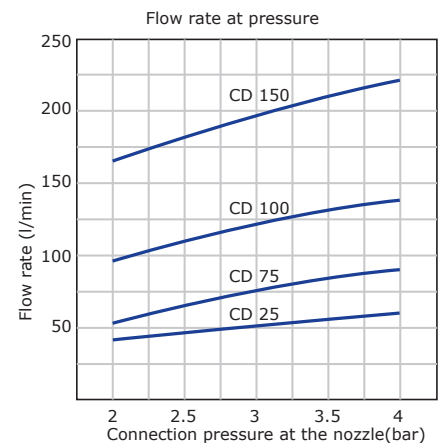
**Applications** - The CHEMIDISC range is available in a wide variety of sizes and is designed for use in harsh chemical environments, as a Hastelloy alternative and in glass lined vessels. CHEMIDISCs constructed in carbon filled PTFE dissipate static electricity in potentially explosive atmospheres.

Pure PTFE CFR21 compliant CHEMIDISCs are used in many pharmaceutical and other applications where the cleaning solution is corrosive to stainless steel. PEEK is available for nuclear and specialist applications. The CHEMIDISC cost effectiveness and reliability is specified by end users, OEMs and contract design companies.

**Operation** - CHEMIDISC has a unique ball bearing free design, meaning no shedding of metal bearing debris and no failure to rotate. CHEMIDISC has only one moving part, the rotating disc which rides friction free on a hydraulic bearing which instantly converts the wash fluid into a sphere of fast moving droplets, distributing the fluid in a complete and uniform manner. Total surface cover is achieved as fast moving, high power droplets simultaneously reach the entire surface of the tank, inlet pipe and overhead nozzles where contamination frequently occurs.

## Technical data:

Max. cleaning diameter:	CD25/75/100/150, 1,5/3/4,6/5 meter
Spray pattern:	360° und 180° up-, downwards
Pressure range:	2–4 bar
Flow rate:	CD25 40–60 LPM, CD75 58–83 LPM, CD100 95–133 LPM, CD150 163–220 LPM (2,4–13,2 m³/h)
Installation opening:	CD25/75/100/150, min. Ø 31/41/55/75 mm
Preferred mounting position:	beliebig
Weight:	CD25/75/100/150, ca. 0,024/0,075/0,113/0,265 KG
Materials:	C.PTFE, PTFE, (PEEK)
Connection types:	CD25 BSP AG, CD75 BSP IG, CD100/150 BSP (NPT) IG
Nozzle property:	Rotating disc
Certificates:	2.2, ATEX, FDA, Food approval, EU 1935/2004
Max. operating temperature:	95°C (203°F)
Max. ambient temperature:	140°C (284°F), 30Min.



The data, technical data and information presented do not release the user from the obligation to check the suitability of the products supplied for the intended application. All information is without guarantee. (Status: 10.12.2021-71427321893-1888948-71042)