

CHEMIDISC

- No ball bearings
- Fast, aggressive wash
- Chemically resistant
- lightweight plastic construction



- FDA or ATEX certification
- pressure range 2–4 bar
- cleaning radius up to 5 meters
- flow rate from 45–220 lpm
- perfect spray ball replacement
- cheap hastelloy alternative
- also available as TURBODISC
- steady spray pattern
- no ball bearing

The CHEMIDISC is a fast rotating tank cleaner that is perfect for replacing static spray balls. In this way, liquid consumption and cleaning time can often be significantly minimised, especially compared to static spray balls. The CHEMIDISC is an alternative to expensive cleaning nozzles made of Hastelloy, it is made of chemically resistant materials optimally suited for the chemical and pharmaceutical industry.

In operation, the cleaning medium drives the rotor, which rotates frictionlessly and at high speed on a bearing of cleaning fluid. This turns into many high-energy drops which are hurled at high speed simultaneously against all areas around the cleaning nozzle.

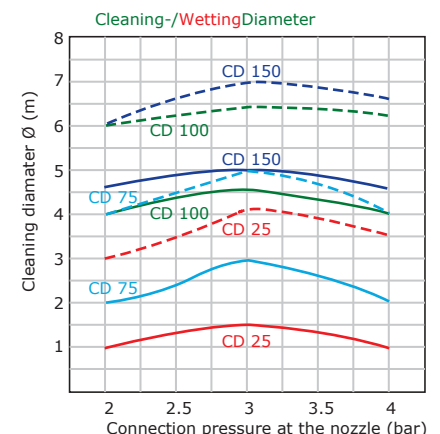
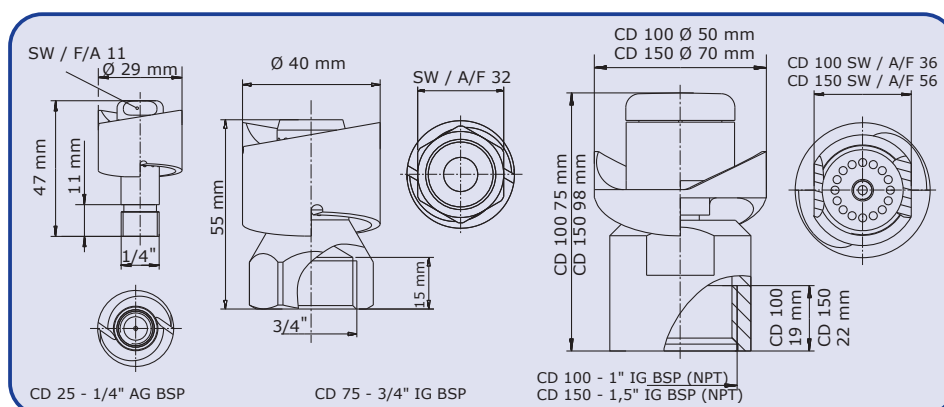
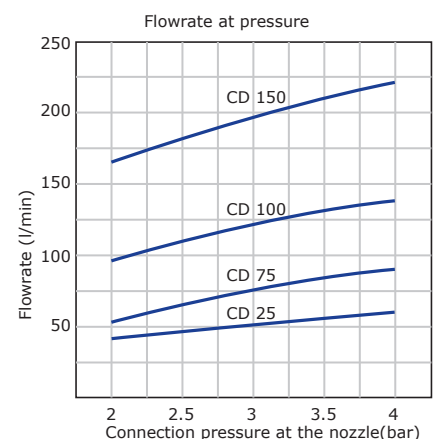
CHEMIDISC tank cleaners are ideal for impact rinsing and can be operated at any angle. The CHEMIDISC's plain bearing system means that these nozzles can often be used for years with virtually no wear.

The CHEMIDISC is also available in stainless steel and Hastelloy as TURBODISC and as retractable cleaning nozzle RETRAKTOR MR2. A wide range of types in different sizes and designs is available. The CHEMIDISC promises exceptional service life even when used with compressed air or superheated steam sterilisation and high temperatures.

Areas of application: Brewery, beverage, milk processing, food, pharmaceutical, chemical and transport industries. Rinsing and cleaning of containers, tanks or plant components of various dimensions, process containers, reactors, dryers, granulating apparatus, storage tanks, coating machines and tank containers.

Technical data:

Max. cleaning diameter:	CD25/75/100/150, 1,5/3/4,6/5 meter
Spray pattern:	360° and 180° up-, downwards
Pressure range:	2–4 bar
Flow rate:	CD25 40–60 LPM, CD75 58–83 LPM, CD100 95–133 LPM, CD150 163–220 LPM (2,4–13,2 m³/h)
Installation opening:	CD25/75/100/150, min. Ø 31/41/55/75 mm
Preferred mounting position:	arbitrary
Weight:	CD25/75/100/150, ca. 0,024/0,075/0,113/0,265 KG
Materials:	C.PTFE, PTFE, (PEEK)
Connection types:	CD25 BSP AG, CD75 BSP IG, CD100/150 BSP (NPT) IG
Nozzle property:	Rotating disc
Certificates:	2.2, ATEX, FDA, Regulation (EC) No 1935/2004
Max. operating temperature:	95°C (203°F)
Max. ambient temperature:	140°C (284°F), 30Min.



The data, technical data and information presented do not release the user from the obligation to check the suitability of the products supplied for the intended application. All information is without guarantee. (Status: 26.02.2022-71427321893-1888948-71042)